

Side Frame Only and Side Frame without Plexi Glass.

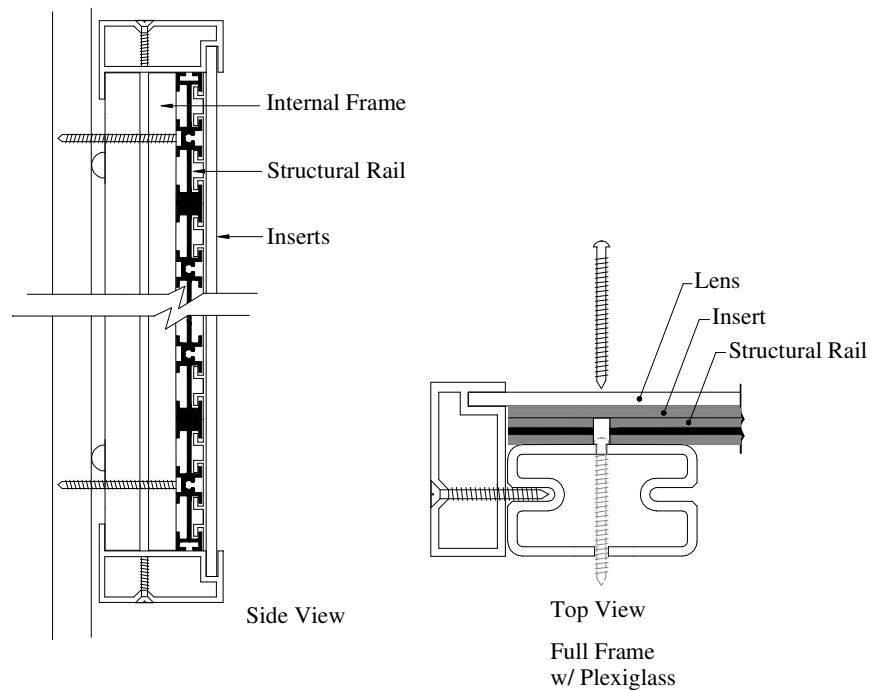
1. Remove side frame (either side). F 15 Torx wrench is supplied.
2. Slide out copy inserts opposite mounting holes--see back of sign for hole locations. Mount sign through exposed mounting holes with screws provided (anchors not supplied). Quantity is determined by the size of the sign.

Full Frame with Plexi Glass

1. Same as above only remove glass before sliding out inserts.
2. Replace Plexi Glass after replacing inserts being careful not to mark or scrape surface.

If you have any questions regarding installation, please contact our Technical Support Department at 800/777-4310.

Typical Application:



IMPORTANT: Prior to installation, remove all contents from box. Inspect each sign for damage. Box should contain signs, hardware, and mounting instructions for each style of mount used. Surface of the sign must be handled with care. Clean with water and mild detergent.

CUSTOMER IS RESPONSIBLE FOR SUITABILITY OF EACH MOUNTING OPTION.
TESTING IS RECOMMENDED PRIOR TO EACH USE.